

SF-A3+

Card Cutter

Product Introduction

SUNFUNG Introducing the SF-A3+ Business Card Cutter, a premium large-format solution designed for on-the-spot, short-run creation of full-bleed business cards, postcards, snapshots, and more. This sturdy and easy-to-operate device is capable of producing up to 230 business cards per minute, catering to the fast-paced demands of modern businesses.

With a user-friendly LCD interface, operators can seamlessly pick from 6 pre-set tasks or input and store up to 10 bespoke cutting configurations. The SF-A3+ card cutter is designed to process 12" x 18" and 13" x 19" printed sheets. Its feed tray can hold forty 250gsm sheets simultaneously and is compatible with paper weights reaching 350gsm / 130# cover. The optional mobile cabinet, complete with a waste receptacle, is ideal for users with higher production requirements, offering effortless mobility and storage.

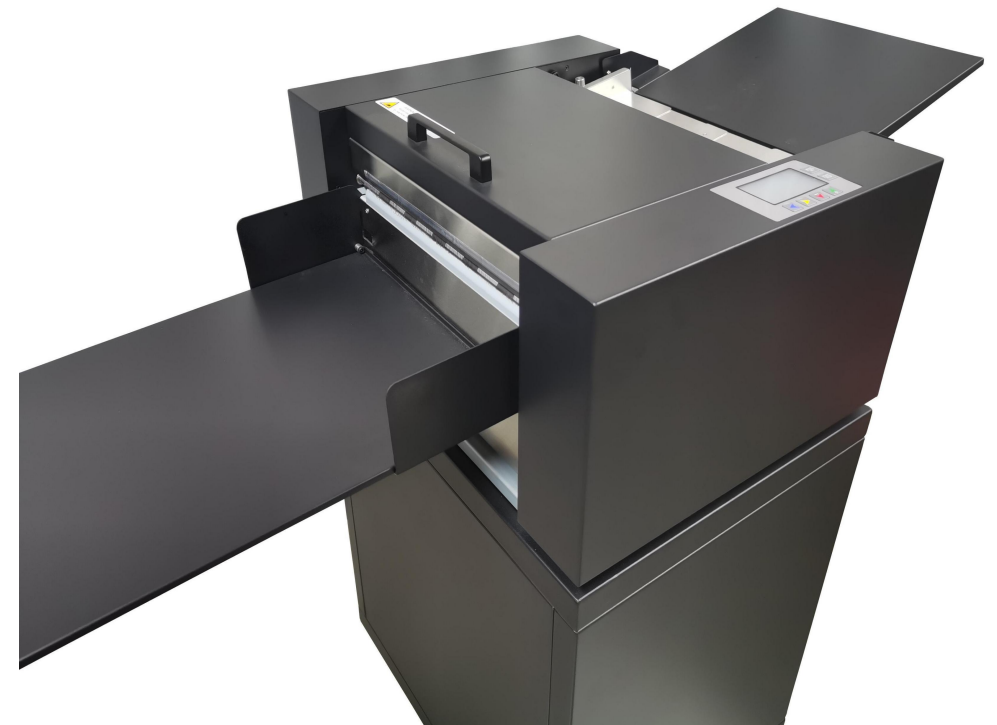
Employing an automatic friction-feed system, the SF-A3+ card cutter efficiently cuts coated and uncoated papers, laminated sheets, and cardstock. The device features self-sharpening, precision cutting blades with accuracy up to 0.1mm, while the integrated registration mark reader further refines cutting precision.

A standard 3.5" cutting cassette is included, enabling the production of 24-up 2" x 3.5" business cards. Additional interchangeable cutting cassettes can be acquired to create an assortment of sizes, including 5" x 7" cards, 3.5" x 5" postcards, 4" x 5" snapshots, 8.5" x 11" full-bleed brochures, 11" x 17" menus, gift tags, mailers, and more.

The SF-A3+ card cutter, with its accessible features and large-format design, is expertly engineered for precision, taking on-the-spot card cutting to new heights. Its market-leading price and outstanding value make it a standout choice in the industry.



SF-A3+
video

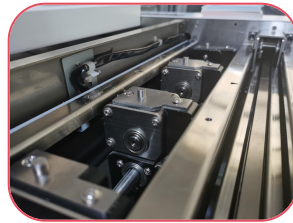
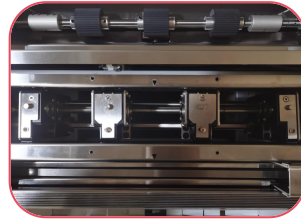


SF-A3+

SF-A3+ Card Cutter

Main Feature

- 1 million cuttings guarantee
- Heavy duty splitter blade
- One machine have 4 cut size in standard
- No need to change splitter cassette for different size
- 40 sheets, 250gsm paper feed tray
- Programmable set
- CE safety standard
- Self-sharpening blade
- Automatic friction feeding



Application



Technical Parameters

Model	SF-A3+
Paper thickness	180 – 350gsm
Paper feed size	SRA3, A3+, A3 size, 12"x18", 13"x19"
Cards size	(85,89,90, 95mm, Customize) x (1-600mm) or (45,50,54mm)
Paper type	Coated paper, Non-coated paper, Laminated paper
Programmable jobs	Up to 20: 7 pre-programmed, 13 custom
Min cut length	40mm
Feed volume	10mm or 40pcs paper(0.25mm)
Feeding	Double roller friction
Registration mark reader	Yes
Cutting accuracy	+/-0.05mm
Cutting speed	230 cards per minute
Machine dimensions	500 x 620 x 260mm
Weight	25kg
Power supply	AC 90-260V , 50/60Hz, 0.5A